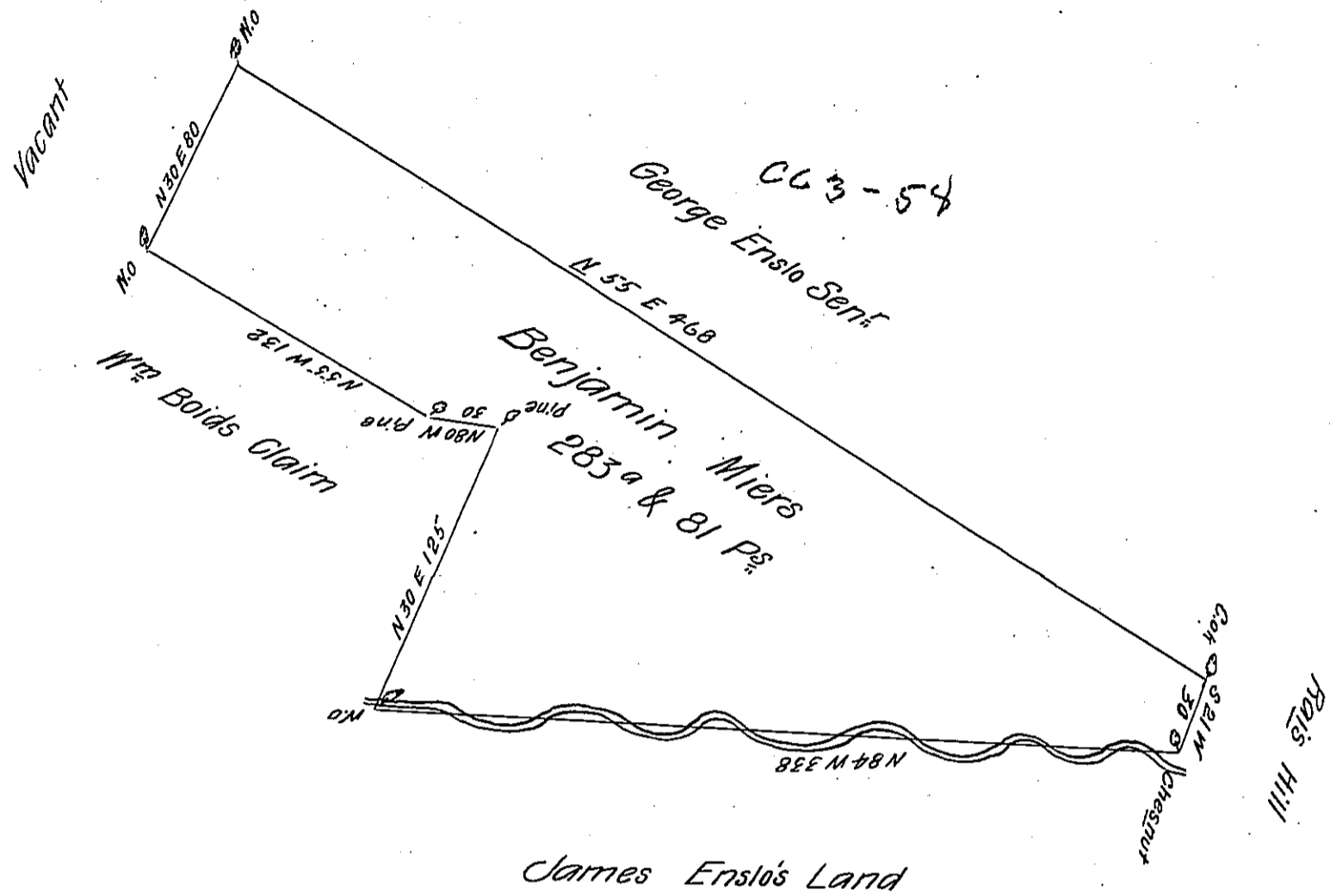


FORM NO. 1.



A draught of a tract of land Situate on the North side of Rays Hill adjoining land of James Enslo and George Enslo Senr in Providence Township in the County of Bedford. Containing two hundred and eighty three acres ^{81 Ps} with the usual allowance of six P^t Cent for Roads &c^o. Surveyed for Benjamin Miers March 10th 1786. In Pursuance of a Warrant dated February 14th 1786.

George Woods D. S.

To John Lukens Esq^r S. G.

IN TESTIMONY that the above is a copy of the original remaining on file in the Department of Internal Affairs of Pennsylvania, made conformably to an Act of Assembly approved the 16th day of February, 1833, I have hereunto set my Hand and caused the Seal of said Department to be affixed at Harrisburg, this twenty ninth day of January 1906.

Lucas D. Brown
Secretary of Internal Affairs.